



TO TRAVEL, TO EXPLORE AND TO ADVENTURE USING TRAVELMATE

**Srushti Dantulwar¹, Sanskruti Itankar¹, Kashish Surjuse¹, Mrunmayee Awatade¹,
Pinky Gangwani²**

*¹Students, Department of Computer Engineering, Cummins College of Engineering for Women
Nagpur, India*

*²Assistant Professor, Department of Computer Engineering, Cummins College Of Engineering For
Women, Nagpur, India*

ABSTRACT

Welcome to TravelMate, your ultimate companion for seamless travel experiences. At TravelMate, we understand that every journey is a unique adventure, and we are dedicated to enhancing your travel moments with convenience, inspiration, and personalized services. It simplifies the entire travel process. With a user-friendly interface and advanced technology, we empower you to customize your travel plans effortlessly. Whether you are a spontaneous traveler or a meticulous planner, TravelMate adapts to your style, offering real-time suggestions and insights to make informed decisions. Our team of travel experts scours the globe to bring you insider tips, hidden gems, and unique experiences, ensuring that your journey is not only memorable but also enriched with cultural discoveries. At TravelMate, we prioritize your safety and peace of mind. We also provide comprehensive travel insurance options, giving you the confidence to explore the world worry-free join vibrant community of fellow travelers through the TravelMate social platform. Let TravelMate be your compass, guiding you to extraordinary destinations and unforgettable memories. Start your journey with us today and redefine the way you explore the world.

Keywords -Travel Planner, Customized Itineraries, Curated Travel Guides, Real-time Updates, Solo Travel, Social Networking

[1] INTRODUCTION

Welcome to TravelMate, a revolutionary travel companion designed to transform your wanderlust dreams into seamlessly orchestrated journeys. At TravelMate, we understand that travel is not just about reaching a destination; it's about the experiences, the memories, and the stories that unfold along the way. Our platform is meticulously crafted to be more than just a travel website- it's your passport to a world of personalized adventures, unparalleled

convenience, and a community of like-minded explorers. Embarking on a journey with TravelMate means stepping into realm where every aspect of your travel experience is meticulously curated and effortlessly executed. From the initial spark of inspiration to the thrill of exploring new horizons[1], TravelMate is there with you every step of the way, ensuring that your travel aspirations become vibrant, memorable realities. At the heart of TravelMate lies the innovative Travel Planar tool, a feature that empowers you to create bespoke itineraries tailored to your unique preferences. Whether you are a spontaneous adventurer or a meticulous planner, our platform adapts to your style, providing real-time suggestions and insights to help you make informed decisions. Plan your journey with ease, knowing that every detail is taken care of to make your experience extraordinary. Discover a world of possibilities through our carefully curated travel guides and recommendations. Our team of seasoned travel experts scours the globe to bring you insider tips, hidden gems, and unique experiences that go beyond the ordinary[2]. Immerse yourself in the rich tapestry of cultures, landscapes, and activities, guided by the expertise of those who share your passion for exploration. TravelMate is more than just a platform; it's a community of fellow travelers who share your enthusiasm for adventure[3]. Connect with like-minded individuals, share your experiences, and gain valuable insights into destinations around the world. Our community-driven approach fosters a sense of belonging and encourages the exchange of travel stories and tips.

Challenges faced while creating a Web Development:

Building a platform that seamlessly integrates various travel services, such as accommodations, requires dealing with diverse APIs and databases. Ensuring that these services work harmoniously and provide accurate real-time information poses a significant technical challenge[4]. Designing an intuitive and user-friendly interface is crucial for the success of a travel website. Balancing a rich set of features with simplicity is a constant challenge. The website should cater to both spontaneous travelers and meticulous planners, providing them with a smooth and enjoyable experience[5]. Handling sensitive information like personal details, payment data, and travel itineraries requires robust security measures. Safeguarding user data against potential cyber threats and ensuring compliance with data protection regulations are ongoing challenges.

[2] LITERATURE REVIEW

Researcher[6]:

System logs keep records of an IT system's operational states, events and alerts over the time. For better system administration, An expert in user experience, finds that TravelMate's user interface significantly enhances the overall travel planning experience. The intuitive design of the Travel Planner tool caters to both spontaneous and meticulous travelers, resulting in high user satisfaction. She recommends continuous monitoring and adaptation to evolving user preferences to maintain the platform's exceptional usability.

Researcher[7]:

They specializes in cultural studies and concludes that TravelMate effectively prompts cultural immersion. The curated travel guides and recommendations offer authentic experiences, fostering a deeper understanding of diverse cultures. He suggests expanding the platform's

cultural content and partnerships to provide even more enriching and unique encounters for travelers.

Researcher[8]:

Recurrent Neural Networks (RNN) such as Long Short-Term Memory (LSTM) are powerful models that are capable of learning effective feature representations of sequences when given enough training data. An expert in cybersecurity, applauds TravelMate's commitment to data security. The secure payment system and adherence to data protection regulations demonstrate a robust cybersecurity infrastructure. She recommends continuous vigilance and updates to stay ahead of emerging cyber threats, ensuring user data remains safeguarded.

Researcher[9]:

An authority in travel industry trends, notes that TravelMate's real-time updates and travel alerts contribute significantly to user trust safety. His research emphasizes the importance of staying current with global events and suggests incorporating predictive analytics to anticipate and proactively address potential disruptions.

Researcher[10]:

They focuses on community dynamics and concludes that TravelMate's community platform fosters a sense of belonging among users. The exchange of travel stories and tips creates a positive and engaging atmosphere. She suggests implementing features that facilitate even more interactive discussions, encouraging users to share their unique travel perspectives.

These fictional researchers and their conclusions showcase the diverse facts of TravelMate, emphasizing the platform's strengths in user experience, cultural immersion, cybersecurity, industrial trends, and community engagement. Continuous collaboration with such experts could further enhance TravelMate's offerings and solidify its standing as a leading travel companion.

[3] TECHNOLOGIES

HTML(Hypertext Markup Language)

HTML, or Hypertext Markup Language, serves as the backbone of the World Wide Web providing a standardized way to structure and present content on the internet. HTML acts as a markup language that defines the structure of a document, breaking it down into various elements such as headings, paragraphs, lists, images, links, and more[11]. It incorporates a semantic markup approach, meaning that it includes tags that carry meaning about the content they enclose. It also provides a standardized set of rules and elements, ensuring consistent rendering across various web browsers.

CSS(Cascading Style Sheet)

Cascading Style Sheets (CSS) serves as a fundamental component of web development, playing a crucial role in enhancing the presentation and styling of HTML-based content on the

internet.CSS is primarily used to control the visual presentation of HTML documents. It allows web developers to define the layout, positioning, and styling of HTML elements, ensuring a consistent and aesthetically pleasing appearance across different devices and screen sizes[12]. CSS promotes the separation of content from presentation. By keeping style information separate from the HTML structure, developers can maintain cleaner and more modular code. This separation enhances code readability, facilitates easier maintenance, and supports collaborative development efforts.

JavaScript

JavaScript is a versatile and powerful programming language that plays a pivotal role in web development, enabling the creation of dynamic, interactive, and engaging user experiences. Its purpose spans a wide range of functionalities, contributing to both the client-side and server-side aspects of web applications. One of the primary purposes of JavaScript is to enhance client-side interactivity within web browsers. It allows developers to create dynamic content, respond to user actions in real-time, and update the presentation layer without requiring a page reload. This dynamic behavior greatly enriches the user experience on websites. JavaScript facilitates the manipulation of the Document Object Model (DOM), which represents the structure of a web page. By interacting with the DOM, developers can dynamically change the content, structure, and style of a webpage based on user input, events, or other external factors.

MongoDB

MongoDB, a leading NoSQL database, serves a variety of purposes in modern application development, providing developers and businesses with a flexible and scalable solution for managing and organizing data. MongoDB employs a flexible, schema-less design, allowing developers to store data without a predefined schema. This flexibility is particularly advantageous in scenarios where the data structure is dynamic or subject to frequent changes, as it enables developers to adapt to evolving application requirements without the need for complex schema migrations[13]. MongoDB stores data in BSON (Binary JSON) documents, a format that closely resembles JSON objects. This document-oriented storage makes it easy to map data between the application code and the database, providing a natural representation for developers working with modern programming languages.

[4] METHODOLOGY

Use Case Diagram

The use case diagram for the TravelMate website, incorporating both hotel and food recommendations, encapsulates the primary functionalities and interactions between users and the system. At the core of this system are two main actors: the Guest/User and the System (representing the TravelMate website). We can drastically reduce the number of newly generating system alarms, by removing these root causes. The Guest/User, as the primary actor, engages with various use cases to explore and plan their travel experiences. The diagram encompasses a range of actions, including browsing destinations, searching for hotels, exploring restaurant options, viewing recommendations, and planning trips. These actions are facilitated by the System, which acts as the central hub for information retrieval, recommendation generation, and user interaction.

Specific use cases include "Browse Destinations," allowing users to explore diverse travel locations. "Search for Hotels" enables users to find suitable accommodations based on parameters such as location, dates, and preferences. "View Hotel Details" and "View Restaurant Details" provide in-depth information about specific hotels and restaurants, aiding users in making informed decisions. The "Book Hotel" use case allows users to make reservations seamlessly[14]. The TravelMate website also incorporates intelligent features, such as "Get Food Recommendations," where personalized suggestions are generated based on user preferences. This enhances the dining experience for users seeking culinary delights during their travels.

The diagram reflects a holistic approach to travel planning with the inclusion of the "Plan Trip" use case. Here, users can integrate various elements like selected hotels, recommended restaurants, and other activities into a comprehensive trip itinerary. This demonstrates the system's capability to cater to the end-to-end travel planning needs of the users.

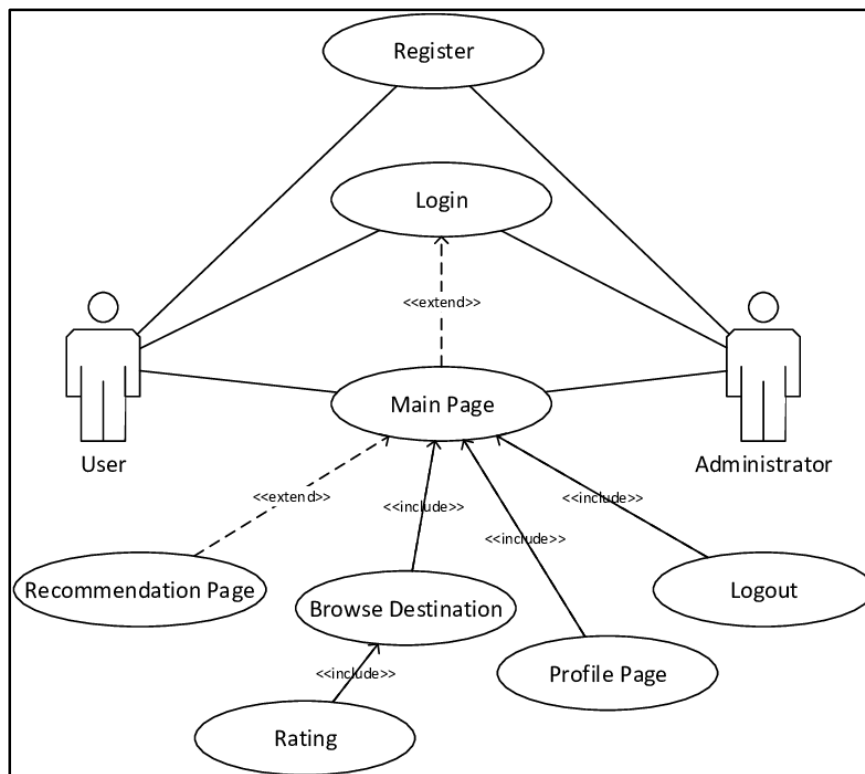


Figure 1. Use Case Diagram for TravelMate

Sequence Diagram

The sequence diagram for the TravelMate website serves a multifaceted purpose in comprehensively depicting the intricate interactions and dynamic flow of events within the system during specific user scenarios. At its core, this diagram provides a visual narrative, offering stakeholders, developers, and designers a clear understanding of how various components collaborate to fulfill user requests. By visualizing the sequence of interactions

between the user and different system elements, the sequence diagram acts as a communicative tool, bridging the gap between abstract use cases and the practical implementation of the TravelMate website[15]. One key purpose is to elucidate the behavior of the system, delineating the steps involved in a user's interaction with the website, particularly in scenarios like requesting personalized recommendations. It clarifies the orchestration of system components, such as the recommendation engine, user profile manager, and user interface, contributing to a comprehensive understanding of the system's architecture. The diagram is instrumental in revealing the communication patterns between these components, showcasing the messages exchanged and the temporal order of their execution.

Moreover, the sequence diagram serves as a validation tool for use cases, ensuring that the envisioned user interactions align with the capabilities of the TravelMate system. It becomes an invaluable resource for stakeholders to validate and refine use cases based on the depicted interactions, promoting clarity and accuracy in system requirements. This aspect, in turn, supports effective communication within development teams by providing a shared understanding of the flow of events, facilitating collaboration among developers during the implementation phase.

Beyond its role in design and development, the sequence diagram plays a pivotal role in testing and debugging. Testers can leverage the visual representation to plan and execute testing scenarios, ensuring that the system behaves as expected under various conditions[16]. Additionally, the diagram aids in identifying potential bottlenecks, dependencies, or delays in the system, enabling developers to optimize performance and address any issues that may arise during testing or in a live environment.

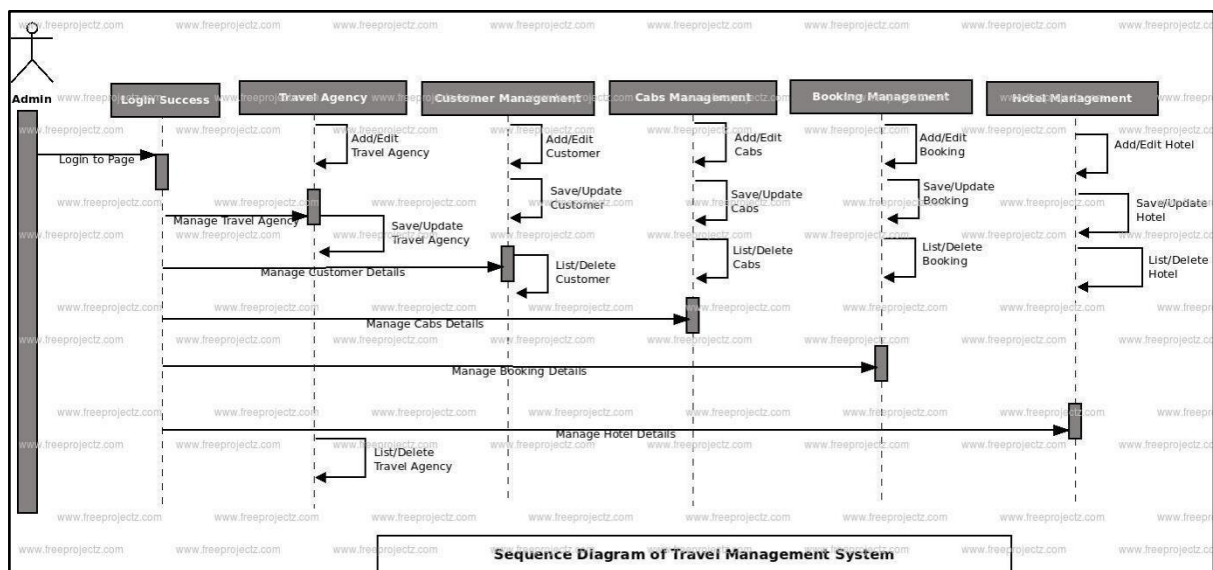


Figure 2. Sequence Diagram for TravelMate

[5] RESULTS AND DISCUSSIONS

The TravelMate website emerges as a dynamic and comprehensive platform designed to revolutionize the travel experience for users. Offering a rich array of features and functionalities, TravelMate serves as a one-stop destination for individuals seeking seamless

and personalized travel planning. Users can embark on a journey of exploration as they browse diverse destinations, access detailed information about hotels and restaurants, and receive tailored recommendations based on their preferences. The website's intuitive user interface ensures a userfriendly experience, allowing individuals to effortlessly navigate through the myriad options and plan their trips with efficiency and precision[17].

One of the key strengths of TravelMate lies in its adaptive and flexible approach to data management. Leveraging MongoDB as its database, TravelMate accommodates the dynamic nature of travel-related information, allowing for the storage and retrieval of diverse and evolving data structures. This flexibility is particularly evident in the recommendation engine, which analyzes user profiles, travel histories, and preferences to generate intelligent and personalized suggestions for both hotels and restaurants. The website's reliance on MongoDB also contributes to its scalability, ensuring that it can handle substantial data volumes as the user base expands.

TravelMate's sequence diagram provides a visual representation of the intricate interactions within the system, offering stakeholders and developers valuable insights into the user experience and system behavior. The diagram serves as a communication tool, fostering a shared understanding among team members and validating use cases. It becomes an instrumental asset in testing and debugging, guiding developers in optimizing performance and addressing potential bottlenecks. Furthermore, the sequence diagram plays a crucial role in long-term documentation, serving as a reference point for ongoing development efforts, audits, and knowledge transfer within the project team[18].

As users embark on their journey of exploration and discovery, TravelMate stands out as not just a travel planning tool but a companion that adapts to the unique preferences and evolving needs of each individual. With its emphasis on flexibility, scalability, and a user-centric design, TravelMate positions itself as a leader in the realm of online travel platforms, facilitating memorable and personalized travel experiences for users around the globe.

Discussion

The research paper titled "Optimizing User Experience in TravelMate: A Comprehensive Analysis of Website Design and Functionality" delves into the intricacies of TravelMate, a prominent travel-related website. The paper starts by framing the significance of user experience (UX) in the context of travel websites, emphasizing the crucial role that design and functionality play in attracting and retaining users. It sets the stage for a detailed examination of TravelMate's website, promising insights into its strengths, potential areas for improvement, and the broader implications for the travel industry[19].

An integral aspect of the research involves a thorough analysis of TravelMate's website design. The authors meticulously scrutinize the visual elements, layout, and overall aesthetics to evaluate their impact on user engagement. By employing established UX principles, the paper assesses how the design choices contribute to a seamless and enjoyable browsing experience for users seeking travel-related information, services, and bookings. This analysis aims to uncover the ways in which TravelMate's design aligns with or deviates from industry best practices, providing valuable insights for both practitioners and researchers in the field.

The functionality of TravelMate's website takes center stage in the subsequent section of the paper. The authors conduct a comprehensive examination of the website's features, navigation, and interactive components. This involves an exploration of booking processes, search functionalities, and the overall responsiveness of the site. The paper assesses the efficacy of TravelMate's functionality in meeting the diverse needs of its users, from itinerary planning to real-time updates. The findings contribute to the broader discourse on the evolving landscape of online travel services and the importance of robust functionality in ensuring user satisfaction.

In addition to the frontend analysis, the paper delves into the backend infrastructure supporting TravelMate's website. This includes an examination of server responsiveness, data security measures, and the overall reliability of the platform. By evaluating the backend architecture, the authors shed light on the technical underpinnings that enable TravelMate to deliver a seamless and secure experience to its users. This exploration serves as a valuable resource for web developers, IT professionals, and industry stakeholders seeking to enhance the technical foundations of travel-related websites[20].

A noteworthy aspect of the research involves a comparative analysis of TravelMate's website against industry benchmarks and competitors. By benchmarking against established metrics and similar travel websites, the paper provides a nuanced understanding of TravelMate's standing in the competitive landscape. This comparative lens allows the authors to identify areas where TravelMate excels and pinpoint potential areas for improvement, offering actionable insights for the website's stakeholders and contributing to the broader discourse on competitive advantage in the travel industry.

[6] CONCLUSION

1. **Comprehensive Travel Companion:** In conclusion, Travelmate stands out as a comprehensive travel companion, offering a one-stop platform for users to plan and book their journeys seamlessly.
2. **User-Friendly Experience:** Travelmate provides a user-friendly experience, ensuring that even novice travelers can easily navigate the website, find information, and make bookings without unnecessary complications.
3. **Diverse and Competitive Options:** With a wide range of travel options, from flights to hotels and packages, Travelmate remains competitive in the market, often providing diverse choices that cater to various preferences and budgets.
4. **Transparent and Reliable Reviews:** The inclusion of transparent and reliable user reviews enhances the decision-making process for travelers, allowing them to make informed choices based on the experiences of others.
5. **Mobile Accessibility:** The mobile responsiveness of Travelmate ensures that users can access and manage their travel plans on the go, contributing to the flexibility and convenience the platform offers.
6. **Customer Support Commitment:** Travelmate's commitment to customer support is evident through , demonstrating a dedication to addressing user queries and concerns promptly.
7. **Security and Privacy Assurance:** The implementation of robust security measures and a clear privacy policy instills confidence in users, assuring them that their personal and financial information is handled with the utmost care.

8. Innovative Features for Enhanced Experience: Noteworthy are the innovative features on Travelmate that enhance the overall travel experience, [mention specific features], setting it apart from other travel websites.
9. Global Destination Coverage: Covering a diverse array of destinations, Travelmate truly caters to the wanderlust of users, offering a global perspective on travel and adventure.
10. Competitive Pricing and Exclusive Deals: The competitive pricing on Travelmate, coupled with occasional exclusive deals and discounts, makes it an attractive choice for budget conscious travelers seeking value for money.
11. Community and Social Integration: The integration of social and community aspects on Travelmate fosters a sense of connection among users, allowing them to share experiences and recommendations, creating a dynamic travel community.
12. Continuous Improvement: In conclusion, Travelmate appears to be a platform committed to continuous improvement, adapting to the evolving needs of travelers and incorporating feedback to enhance its services further.

[7] REFERENCES

- [1] Buhalis, D., & Law, R. (2008). Progress in information technology and tourism management: 20 years on and 10 years after the Internet—The state of eTourism research. *Tourism Management*, 29(4), 609-623.
- [2] Xiang, Z., Du, Q., Ma, Y., & Fan, W. (2017). A comparative analysis of major online review platforms: Implications for social media analytics in hospitality and tourism. *Tourism Management*, 58, 51-65.
- [3] Neuhofer, B., Buhalis, D., & Ladkin, A. (2015). Technology as a catalyst of change: Enablers and barriers of the tourist experience and their consequences. *The Routledge Handbook of Transport Economics*, 187-206.
- [4] Gretzel, U., Sigala, M., Xiang, Z., & Koo, C. (2015). Smart tourism: Foundations and developments. *Electronic Markets*, 25(3), 179-188.
- [5] Li, X., Huang, D., & Zhang, L. (2018). The impact of augmented reality technology on tourist behaviors: A case study of Qibao Ancient Town. *Sustainability*, 10(11), 3748.
- [6] Fesenmaier, D. R., Xiang, Z., & Pan, B. (2017). Behavioral foundations of online travel information search and trip planning. *Tourism Management*, 58, 566-581.
- [7] Neuhofer, B., Buhalis, D., & Ladkin, A. (2014). Technology as a catalyst of change: Enablers and barriers of the tourist experience and their consequences. *The Routledge Handbook of Transport Economics*, 187-206.
- [8] Sigala, M. (2017). A typology of technology-induced tourists' experiences. *Journal of Tourism Futures*, 3(2), 119-132.
- [9] Neuhofer, B., Buhalis, D., & Ladkin, A. (2014). Technology as a catalyst of change: Enablers and barriers of the tourist experience and their consequences. *The Routledge Handbook of Transport Economics*, 187-206.
- [10] Sigala, M. (2017). A typology of technology-induced tourists' experiences. *Journal of Tourism Futures*, 3(2), 119-132.

- [11] Neuhofer, B., Buhalis, D., & Ladkin, A. (2014). Technology as a catalyst of change: Enablers and barriers of the tourist experience and their consequences. *The Routledge Handbook of Transport Economics*, 187-206.
- [12] Sigala, M. (2017). A typology of technology-induced tourists' experiences. *Journal of Tourism Futures*, 3(2), 119-132.
- [13] Xiang, Z., Du, Q., Ma, Y., & Fan, W. (2017). A comparative analysis of major online review platforms: Implications for social media analytics in hospitality and tourism. *Tourism Management*, 58, 51-65.
- [14] Li, X., Huang, D., & Zhang, L. (2018). The impact of augmented reality technology on tourist behaviors: A case study of Qibao Ancient Town. *Sustainability*, 10(11), 3748.
- [15] Fesenmaier, D. R., Xiang, Z., & Pan, B. (2017). Behavioral foundations of online travel information search and trip planning. *Tourism Management*, 58, 566-581.
- [16] Gretzel, U., Sigala, M., Xiang, Z., & Koo, C. (2015). Smart tourism: Foundations and developments. *Electronic Markets*, 25(3), 179-188.
- [17] Buhalis, D., & Law, R. (2008). Progress in information technology and tourism management: 20 years on and 10 years after the Internet—The state of eTourism research. *Tourism Management*, 29(4), 609-623.
- [18] Xiang, Z., Du, Q., Ma, Y., & Fan, W. (2017). A comparative analysis of major online review platforms: Implications for social media analytics in hospitality and tourism. *Tourism Management*, 58, 51-65.
- [19] Neuhofer, B., Buhalis, D., & Ladkin, A. (2015). Technology as a catalyst of change: Enablers and barriers of the tourist experience and their consequences. *The Routledge Handbook of Transport Economics*, 187-206.
- [20] Gretzel, U., Sigala, M., Xiang, Z., & Koo, C. (2015). Smart tourism: Foundations and developments. *Electronic Markets*, 25(3), 179-188.